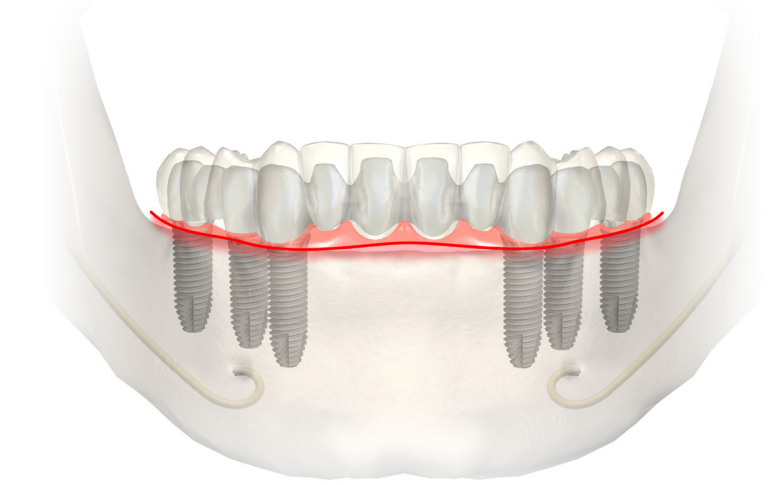
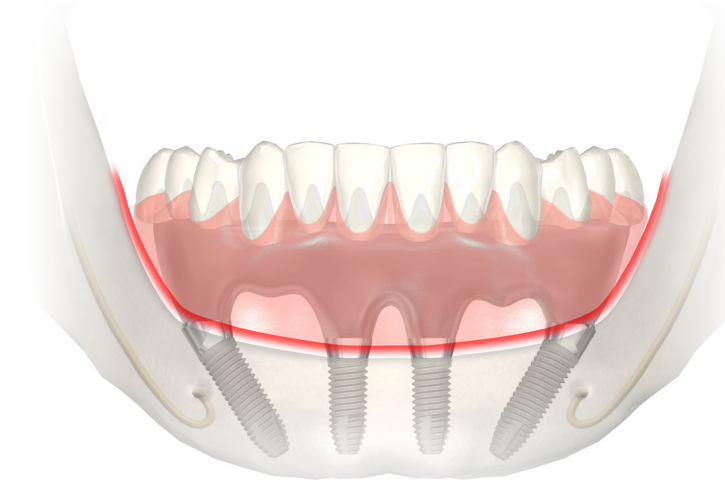
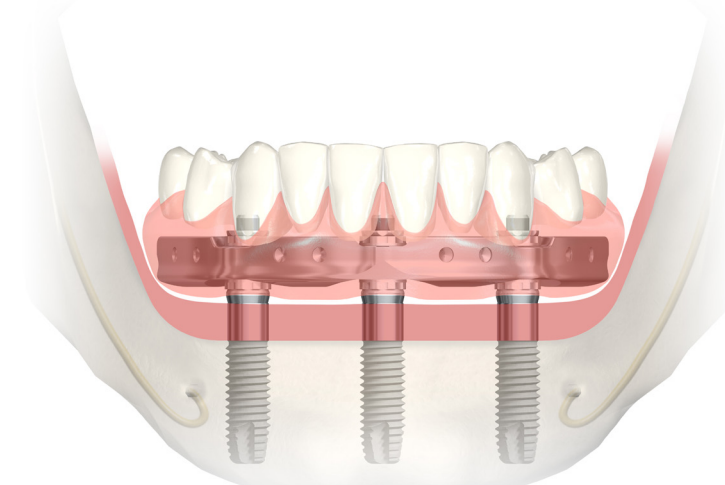
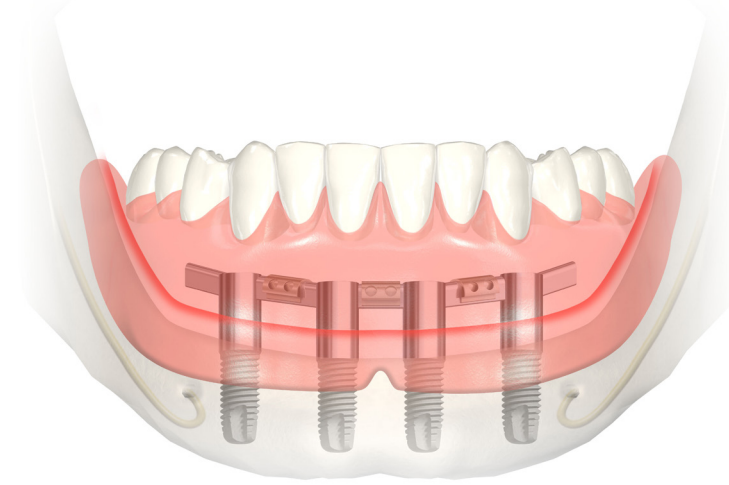
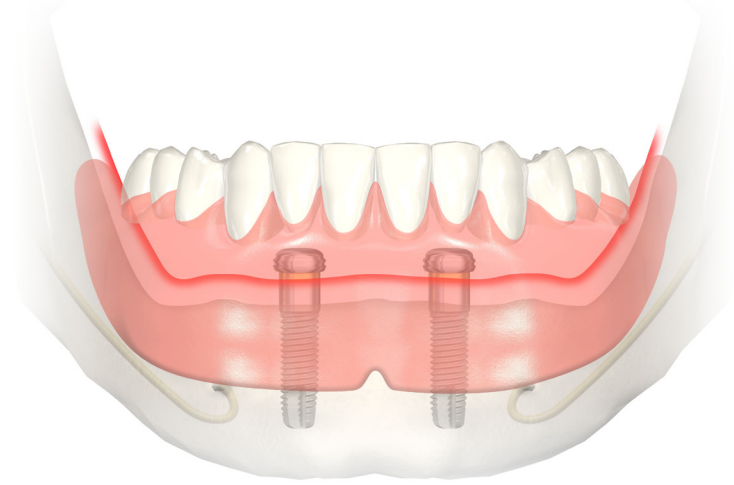


Options for replacing missing teeth in one or both jaws

Low cost / versatility

High cost / versatility



Removable overdenture
Locator®, Ball abutments, ERA

Removable overdenture
Bars

Trefoil™

All-on-4®
treatment concept

Other fixed, implant supported options

Removable

Fixed

Lower & Upper Jaw

Lower Jaw

Lower & Upper Jaw

Please note:

Dental professionals are advised to always inform patients about potential risks of dental implant treatment based on their individual dental situation. For a list of potential risks, please refer to the Nobel Biocare patient website nobelsmile.com.

Important safety information

Treatment with dental implants is a surgical procedure and requires prior evaluation by your dentist to make sure your dental and general health permits dental implant treatment. Placement of dental implants is done during a surgical procedure, which has associated general risk, including infection, possible damage to nerve tissue, and excessive bleeding during or after the surgery. Consult your clinician to find out if dental implants are the right option for you.

© 2018 Nobel Biocare USA, LLC. All rights reserved. www.nobelbiocare.com MKT-4206 Rev. 00 (05/18, GMT 56352)
Nobel Biocare, the Nobel Biocare logotype and all other trademarks are, if nothing else is stated or is evident from the context in a certain case, trademarks of Nobel Biocare.
Please refer to nobelbiocare.com/trademarks for more information. Product images are not necessarily to scale.

Nobel Biocare is your dentist's preferred partner.

